

EVENTS & RETREATS

SEPTEMBER 2024 - JUNE 2025



ASHBURNHAM

PLACE

WELCOME TO EVENTS

Discover the array of events we have to offer in 2024/2025 at Ashburnham Place, a place where individuals from diverse backgrounds have found solace and inspiration for over six decades.

Our events, led by talented speakers, provide an opportunity to delve into fresh expressions of worship and faith, as well as to deepen your understanding and connection with God.

At Ashburnham Place, you will be surrounded by stunning natural beauty, with woodland walks, serene lakes, and tranquil night skies providing a peaceful backdrop for reflection and renewal. Our events are designed to cater to a wide range of interests and backgrounds, with the hope that all who attend will be equipped in their spiritual journey.

We invite you to become a part of the Ashburnham Place story and look forward to welcoming you to this sacred corner of East Sussex.

CONTACT US

Ashburnham Christian Trust
Ashburnham Place
Battle
East Sussex
TN33 9NF
United Kingdom

Reception/Bookings Office is open
Tuesday - Sunday 9am - 4pm
Monday - Closed

Telephone: 01424 892244
Book online at
www.ashburnham.org.uk/events



Follow us
@ashburnhamplace



Annie Mackenzie
Events Manager

INFORMATION

INTRODUCTION

Ashburnham Christian Trust provides hospitality and home to groups and individuals from the broadest expression of the Church. As such our hosted events reflect a breadth of theological views and standpoints, we are not endorsing these as our own, instead attempting to provide a range of retreats that encompass some of the glorious diversity within the body of Christ.

DAY EVENT PRICING

Pricing for our Day events are based on the number of meals and refreshments provided during the event day, and if any materials are provided. Which is why you will find some of our day event prices differ.

CHILDREN AND YOUTH

Please note that some events have been intentionally restricted to adults, and we haven't listed children/youth prices. However, where children and youth are included for an event, you will find listings of significantly reduced pricing. Please note that child/youth pricing assumes an adult will be sharing. Ages 0-4 are FREE to those events that include children.

GROUP BOOKINGS

If you would like to book a group of nine people or more on any of our events, to book and be paid for at the same time, please contact our bookings team on 01424 892244 for group booking prices.

SOAKING WORSHIP

As part of our 'Worship Wednesday' here at Ashburnham Place, we enjoy hosting a 'Soaking Worship' session in the Prayer Centre between *8:15 pm - 9:15 pm.

We encourage Jesus encounters as you read scripture, journal, dance or rest.

*Time or venue may occasionally change.

WIFI

We offer Wi-Fi in all the conference rooms and guest public areas. However, due to the size of the site we do not guarantee Wi-Fi coverage in the bedrooms, although this is possible in some of the rooms.

MOBILE SIGNAL

As with the WiFi, we cannot guarantee mobile coverage across the site, especially as receiving signal can be highly dependent on a guest's network provider. In our experience, the best signal can be found in the Welcome Lounge (near Reception), the Front Terrace, and in some of the meeting rooms at the front of the building. Coverage in the bedrooms is not so good, however, and in some instances non-existent. So you need to be aware that you may not get any signal in many areas of the building and grounds. We realise guests will on the odd occasion need to make an urgent call, and we can generally facilitate this from Reception via landline, if no signal is available. Please note these should be for emergencies only, and not for general day-to-day or social calls, and will need to be during Reception open hours.

PRAYER MINISTRY

Praying alone is so important, but sometimes we all really need someone else to pray with us. We are pleased to be able to offer prayer ministry sessions for guests. This will be with two or more of our trained prayer ministers who are part of the Ashburnham Place community. Please enquire at reception to arrange a session.

EVENT PRICING

Good news! The prices listed in this brochure are all-inclusive, including accommodation for residential guests, and event meals and refreshments for all ticket types, and for the days and times shown. We offer residential event packages with en-suite rooms, which can be booked on a single or double occupancy basis. Please note that the prices listed in this brochure are for single occupancy, along with details of savings if you were to book as double occupancy (two sharing). Day event prices are non-residential and include all event meals and refreshments for the period shown.

Please note that events are available on a book in advance basis only and bookings will generally close about 3-5 days prior to an event. We are not generally able to include guests who turn up on the day unannounced on our events.

Our desire is to keep pricing as competitive as possible; however, as some event costs are much higher than others, due to the materials and services we provide as part of the event, you will see that we charge extra for some.

An example of this is where we provide all materials and equipment for our art/creative events, so guests don't have to bring this with them, and it also makes an opportunity for novices to try something new, without purchasing all the equipment..

Our bedrooms include bed linen, towels and tea/coffee making facilities, and have hair dryers.

ACCESSIBLE AND GROUND FLOOR ROOMS

Accessible rooms: Please note that we have limited accessible rooms available for booking. If you require this facility, we would ask you book well in advance to avoid any disappointment. These rooms do book up quickly.

Ground floor rooms: Please also note that our ground floor standard rooms may have a few steps up for access. If you require a ground floor room, again, we suggest you book early, as these rooms go quickly. Our rooms are booked on a first come first served basis, and if you don't give a preference at the time of booking, you could be allocated a first floor room. So it's really important you give us all the information needed at the time of booking.

Carer/helpers: Please note that whilst we will always be as helpful and accommodating as we can for those less able guests attending our events, guests booking must be able to move about the centre and care for themselves. We are unable to give care provision, and any guest, or relative, booking, and where you feel extra assistance is needed for mobility or medical needs, you should consider how you or any guest or relative booking will cope.

Anyone needing mobility or medical needs assistance will therefore need to ensure they bring someone who will be solely responsible to help them. In this instance, please request either, double occupancy (shared room), or a next-door room if more suitable, when booking a Carer/helper in, whichever is more appropriate. We will give a 50% discount to a person who comes as your assigned Carer/helper. Please read the events descriptions thoroughly to see if the event is suitable. For example, one event will require guests to stand for long periods and therefore will be unsuitable for those unable to do this.

SEPTEMBER
2024



History *WALK & TALK*

Wednesday 4th September 10am - 12pm 2024

History Walks
Jay Ashworth

The grounds and gardens here at Ashburnham Place have been shaped over the generations by a number of gardeners and landscape designers, including Lancelot 'Capability' Brown.

Join Jay, one of our seasoned RHS trained garden team, as she leads the walk around the stunning grounds and gardens. The walk will be followed by refreshments back at the house.

£25 per person including refreshments





Tuesday 3rd September 4pm - Friday 6th September 10am 2024
Fire in the Desert
Dr Angela Walker

Do you feel like you are going through a wilderness season where God seems distant or you feel alone and don't know where you are going? Then come along to this retreat to discover the reasons why we experience wilderness seasons and God's way through.

This retreat is a time for you to draw closer to God and discover the various ways He speaks to you, to discern His Spirit and encounter His presence as He guides you onward.

This retreat is led by Dr Angela Walker, Founder of THEO Ministries, and based on her book 'Fire in The Desert'.

For more information about Angela and THEO Ministries visit www.theoministries.com

£321 En-Suite room per person
£276 Shared room per person (ACT768)



Tuesday 24th 4pm - Friday 27th September 10am 2024
The Book of Ruth
Rosie Morgan

You are invited to join us for a time of teaching, worship, rest and reflection in the autumn beauty of Ashburnham place. God's word is as relevant today as it was yesterday and will be tomorrow. He has things he wants to share with you on this special break where we will be looking deeper into the book of Ruth.

This book is an incredible gem almost hidden in the Old Testament, yet with rich treasures. Within the book there are themes of God's plans and purposes, His provision and promises, his protection and great love for us, both now and for the future. The book also has much to say about identity and about belonging. It shows how our Father God lovingly meets our every need even in the difficult times.

Come along with an open heart, an open Bible and your journal. We look forward to a special time together.

£321 En-Suite room per person
£276 Shared room per person (ACT774)



Tuesday 24th 12pm - Friday 27th September 10am 2024

Creative Writing - Fields and Walking
Chris Leonard

£338 En-Suite room per person
£291 Shared room per person (ACT767)

These breaks provide a safe space to grow in confidence, both in writing and as a person. Because our creative God is present, each break turns out differently and far more happens than our writing. 'Fields and Walking' are our themes for 2024. Walk your writing through fields of green, brown, gold... of ice, conflict, or magnetism, extending your fields of vision and interest.

Take time to notice the little things and the important ones, like who is walking with you, or with those you're writing about. Walk your imagination through seasons of sunlight or shadow, to fields familiar or strange, desolate or 'full of folk'.

Set your pen walking through ploughed fields where seeds are sown, crops harvested or treasure buried... We're very inclusive and welcome people with no writing experience and with plenty; your level of belief, education and language don't matter either.

The only commitment is to write at least one sentence a day and then to share it. These aren't writing courses, but we provide plenty of inspiration through pictures, words, music and worship. We laugh, relax, listen, are heard and often make new friends. Well-published writer Chris Leonard has led nearly 60 creative writing breaks at Ashburnham and elsewhere. Wonderful Celtic musicians Nigel and Julie Cameron lead our worship and help inspire us.





OCTOBER 2024



Tuesday 1st October 12pm - Friday 4th October 10.30am 2024

Time Out

Eve & Steve Wood

Relax, Refresh, Renew. Autumn at Ashburnham Place can be stunning. During our Time Out Break you can enjoy walks in our extensive woodlands to enjoy the changing colours.

There will also be morning & evening devotional times, opportunities to join in a guided prayer walk, and individual prayer, various talks, crafts, a quiz or two, & plenty of time to rest & relax!

£336 En-Suite room per person
£291 Shared room per person (ACT775)



Tuesday 22nd October 4pm - Friday 25th October 10am 2024

Time Away with Jesus

Valerie Elyott

Time away with Jesus - The goal is to awaken hearts to the Lord's nearness, by providing an environment and atmosphere for personal quality time with the Lord, away from our usual distractions. Each session is facilitated in a way that encourages personal engagement with the Lord.

Sessions will include:

- Times of worship and prayer.
- Reflective teachings on how to develop and maintain an intimate relationship with the Lord.
- Personal time on the beautiful grounds of Ashburnham Place.

£321 En-Suite room per person
£276 Shared room per person (ACT794)



NOVEMBER 2024

EVENTS & RETREATS



Tuesday 12th November 4pm - Friday 15th November 10.30am 2024
Deep Calling Unto Deep
Angela Walker

Come and join Dr Angela Walker in this retreat, a time for you to go deeper and draw closer to the heart of God, as you discover your Belonging and Identity, as well as Encountering the Cross & Wilderness seasons, and His Glory-Presence. Discover the ways God speaks, how the Father sees you and what He wants to say to you. Come on this retreat if you want to connect your heart with the heart of Father God and pursue a deeper relationship with Him.

£321 En-Suite room per person
£276 Shared room per person (ACT769)



Tuesday 26th November 4pm - Friday 29th November 10.30am 2024
Honesty Over Silence, it's ok not to be ok
Patrick Reagan

Patrick Regan examines the strength in letting go of our need to be in control. He helps us explore how we can stop comparing ourselves to others and instead live authentically and honestly, as we grow into the people God has created us to be.

£321 En-Suite room per person
£276 Shared room per person (ACT804)





Tuesday 19th November 4pm - Friday 22nd November 10.30am 2024
An Advent Break - Presents and Presence
Rosie Morgan

You are invited to our Advent break for women in the winter beauty of Ashburnham place. There will be time for worship, teaching, rest and refreshment, as we journey through Advent and towards the Christmas celebrations.

Advent is a precious season and yet it can be a time when time when there are many distractions, false expectations somehow Emmanuel – Christ with us can get lost in the wrappings and trappings. Once again we will focus on the Christmas story and the greatest gift God gave in sending his son to the world he so loved. There will also be time to reflect on the past year and prepare ourselves for the Christmas celebrations and the year to come.

Our Advent breaks are special times for drawing close to God. Let's be present in God's presence and look to receiving his gifts with joy and gratitude. Come just as you are and will a heart to draw closer to God, oh and don't forget your Christmas jumpers.

£321 En-Suite room per person
 £276 Shared room per person (ACT773)



Tuesday 26th November 4pm - Friday 29th November 10.30am 2024
Exploring Israel with Jesus
Phil Grasham

Are you interested in seeing the significant Gospel sites connected with Jesus? Using photos, videos, and Bible studies, you will learn about first-century culture, geography, and history.

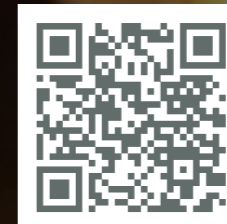
Without the need for a passport or walking boots, we'll go to Capernaum – Jesus' Galilean base – discover where Jesus fed the five thousand, find out where Jesus was crucified and buried, see where Pentecost took place, and much, much more.

Phil Grasham is a Trustee for CMJ UK with a master's degree in Kingdom Theology. He has seventeen years' experience in teaching at several UK Bible Colleges and regularly speaks in local churches as well as leading tours to Israel each year.

<https://www.cmj.org.uk/explore-israel-with-Jesus>

£321 En-Suite room per person
 £276 Shared room per person (ACT803)

**SUBSCRIBE TO THE
EVENTS MAILING LIST**



SCAN THE CODE ABOVE WITH YOUR
PHONE CAMERA OR VISIT
WWW.ASHBURNHAM.ORG.UK/EVENTS

For booking or more information
please visit the website

DECEMBER
2024



Tuesday 3rd December 12pm - Friday 6th December 10.30am 2024

Time Out

Steve & Eve Wood

During the Advent season take the opportunity to wrap up for a walk or curl up in front of the fire; take time out to be with God. Enjoy the restful environment, good food and fellowship in the company of old and new friends.

There will be morning & evening devotional times where we anticipate the birth of our Saviour Jesus. All part of a varied range of optional activities which includes opportunities to join in a guided prayer walk, and individual prayer. Not forgetting a special Festive Dinner on Thursday evening!

£336 En-Suite room per person

£291 Shared room per person (ACT771)



Christmas Wreath Making Workshops

Jay Ashworth

Dates:

December 3rd 10am - 12pm

December 5th 10am - 12pm

December 7th 10am - 12pm

December 7th 2pm - 4pm

Come and join Jay Ashworth, and learn how to make a beautiful Christmas wreath from scratch. We will be using natural materials gathered from our gardens, including conifer, holly, ivy and other seasonal greenery. The workshop will take place in the Old Dairy, which is heated; meet at reception for directions.

£45 per person and includes materials and refreshments



JANUARY 2025



Tuesday 14th January 4pm - Friday 17th January 10.30am 2025

Walking Through Winter: Journeying Through Loss

Katherine Gantlett

Just as winter comes each year, we will all encounter spiritual winters of loss. These seasons come with so many questions. Who is God? How is God at work in this season? Who am I? What's the meaning and purpose of life?

For many of us we find ourselves enduring winter seasons, desperately looking for any sign of spring, or trying to force spring ourselves. But, if we can embrace winter and 'get out into it', we will discover there is real beauty to be found even in the bleakest of winters.

During this retreat we will reflect on our images of God and ourselves, and how these impact our journey through winter. We'll explore how spiritual practices such as lament, the Examen, and journeying with others can help us 'brave the elements' of winter to authentically journey with God, through the depths of winter, experiencing the warmth of His loving presence, whilst holding on to the promise that spring will come.

Weather dependent, participants will be encouraged to spend time out in the beautiful grounds of Ashburnham Place, so please come prepared, as has been famously said, 'there is no such thing as bad weather, only unsuitable clothing!' We'll also be putting into practice the Danish art of Hygge. So, expect lots of cake, candles, and crackling fires with plenty of time to get cosy, rest and reflect. Informal spiritual accompaniment will also be available.

£321 En-Suite room per person

£276 Shared room per person (ACT806)



Tuesday 21st January 4pm - Friday 24th January 10.30am 2025

At the Threshold

Anna Robinson

In the Celtic calendar, Winter signifies the beginning of the year and Spring begins on the first of February, the midway point between the longest night and the balance of light and dark. This retreat will be drawing on the theme of thresholds. Irish poet and philosopher John O Donohue wrote 'A threshold is not a simple boundary: it is a frontier that divides two different territories, rhythms and atmospheres'.

It takes courage and a deep trust in the goodness within and without as the new and unknown unfolds.

This retreat is for those on a faith shifting journey, who perhaps no longer fit where they once belonged and/or find themselves in a liminal space, moving from certainty to embracing mystery. Take some time to slow down, be still, notice and listen... to your soul, to nature, to friend and stranger and to the Divine within you and beyond you.

Anna Robinson is a host on Nomad Podcast. She curates space for meditation and contemplation, reflection and thoughtful exploration for spiritual seekers, sojourners and nomads. She finds her roots in the mystical and contemplative traditions of Christianity.

£321 En-Suite room per person
£276 Shared room per person (ACT801)

STUDY THEOLOGY

AT ASHBURNHAM PLACE

 KINGDOM THEOLOGY

Cert HE/BA/Graduate Diploma/MA Postgrad

Did you know you can study Theology to degree level at Ashburnham Place?



APPLY
HERE



FEBRUARY 2025



Tuesday 11th February 4pm - Friday 13th February 10.30am 2025

Living to Finish Well

Marjie Sutton

It's a fact that one day each of us will die, ready or not, and yet most of us avoid the subject like the plague. Choosing to believe we have plenty of time, we shelve this difficult subject and all that goes with it until later.

But what if we could leave this world with no regrets, either for things we could or should have done - or we wish we hadn't done? What if we could leave a legacy far beyond money or possessions? How would you like to be remembered, and how is your life shaping that legacy now? And what about eternity?!

"Preparing for death is one of the most empowering things you can do.

Thinking about death clarifies your life."

Over these few days we'll look at important practical matters relating to end-of-life, understanding the facts rather than the myths, and practical ways in which we can make life easier for those who will have to clear up after us! We'll think about key issues that often get shelved and yet which influence and shape the legacy we leave.

There will be time to reflect and plan, to begin tackling your own issues, and time together to talk, share, encourage and learn from each other.

Join Marjie as she unpacks this tough subject through the framework of her book *Living to Finish Well* which unpacks this unexpectedly optimistic subject

£321 En-Suite room per person
£276 Shared room per person (ACT810)

WHILE YOU'RE HERE GET SOME MINISTRY TIME

SOAKING WORSHIP

Come, sit back, rest, relax and receive as live music is played & sung over you. No need to book. Main prayer Centre space 8:15pm on Wednesdays.



PRAYER WALKS

This is an invitation to join us for a facilitated time of silence, exploring and optional sharing; come & hear God's voice in and through nature.

We meet at 12pm in front of the prayer centre most Thursdays. No need to book, but please check with reception that it is on the week you are here.



PRAYER MINISTRY

Have our prayer ministry team pray over you using one of the tools from our prayer menu; prophetic song ministry, art ministry, listening prayer, healing prayer or a mixture of the above! Limited slots available.

Occasionally, we offer 'Sound Portraits' which are personal prayer, music and song ministry in the Orangery. Thursdays 11am - 12pm. Book at reception.



GET INVOLVED ASHBURNHAM PLACE

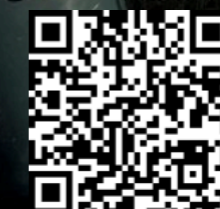
If you're visiting us or live locally and have a little free time, there's plenty of opportunities to join one of our teams for a day or even longer.

You could get involved in

- Grounds work
- Maintenance work
- Administration/PA
- Ornamental gardening
- Kitchen Garden - Vegetable growing
- The Food Forest
- Housekeeping



MORE INFO



Use your phone camera to scan the code on the left or go to www.ashburnham.org.uk/volunteer



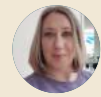
Tuesday 11th February 4pm - Friday 13th February 10.30am 2025
7 Ways to Pray
Amy Boucher Pye

Encountering God through Prayer or 7 Ways to Pray.

Want to boost your relationship with God? Come and explore different ways to pray, including praying with the Bible, practising God's presence, listening prayer, the prayer of lament. Each is rooted in ancient practices and each can give us fresh ways to relate to God. We'll also have time for individual and group prayer exercises. God loves to meet with us as we come to him!

Amy Boucher Pye is a writer, speaker, and spiritual director. She's the author of six books, including 7 Ways to Pray and Transforming Love. Find her at amyboucherpye.com

£321 En-Suite room per person
£276 Shared room per person (ACT787)



Tuesday 11th February 4pm - Friday 13th February 10.30am 2025
Healing with Creativity – A Stained Glass retreat/Workshop
Zoe Stuttard

Taking the broken pieces in art to make something new, is something that Jesus always does with us, when we turn to Him, He restores us and changes our lives.

Come and join this stained glass workshop! No experience is necessary, just come with enthusiasm and imagination. You will provide with all the tools and equipment, plus a selection of design templates, not to mention a beautiful selection of glass. If you would like to design your own piece, that would be encouraged and wonderful too! I will teach you how to make stained glass suncatchers using the copper foil technique, and if you would like to, you could also make a small stained glass panel using lead. We will have time for worship, a word for each day and time for prayer and reflection and enjoy some gentle music in the background while we work.

All the materials, accommodation, meals and coffee and Tea breaks are included with in the price.

£480 En-Suite room per person
£414 Shared room per person (ACT807)




THE ORANGERY
ASHBURNHAM PLACE

OPEN
Tuesday – Sunday:
10.30am – 4.00pm
Monday - Closed



To reserve a table please call
01424 894201 or email
bookings@ashburnham.org.uk



JOIN THE ORANGERY CLUB

To get started scan the code, download the app and 'check in'



MARCH
2025



Wednesday 12th March 10am - 12am

History Walk & Talk

Jay Ashworth

The grounds and gardens here at Ashburnham Place have been shaped over the generations by a number of gardeners and landscape designers, including Lancelot 'Capability' Brown.

Join Jay, one of our seasoned RHS trained garden team, as she leads the walk around the stunning grounds and gardens. The walk will be followed by refreshments back at the house.

£25 per person including refreshments



Tuesday 18th March 12pm - Friday 21st March 10.30am 2025

Creative Writing- New & Old

Chris Leonard

These few days provide a safe space to grow in confidence, both in writing and as a person. Because our creative God is present, each break turns out differently and far more happens than our writing. 'New and Old' are our themes for 2025.

What treasures might writing draw from our memories, observations and imagination? Jesus compared some disciples to 'the owner of a house who brings out of his storeroom new treasures as well as old' (Matthew 13:52).

What things and people fascinate you - shiny and new, or ancient and venerable, captured right now or imagined in the future? Do you (or your characters) prefer new, experimental trends or tried and tested older traditions? Which words and styles, ancient or modern, might best reach people?

We're very inclusive and welcome people with no writing experience and with plenty; your level of belief, education and language don't matter either. The only commitment is to write at least one sentence a day and then to share it. These aren't writing courses, though we provide plenty of inspiration through pictures, words, music and worship. We laugh, relax, listen, are heard and often make new friends.

**£336 En-Suite room per person
£291 Shared room per person (ACT788)**



Tuesday 25th March 4pm - Friday 28th March 10am 2025

Bouncing Forwards, resilience, courage, and change

Patrick Reagan

How many of us have heard these well-meaning words when faced with mental or physical health challenges, trauma or the loss of dreams? And yet, life's battles can leave us scarred and changed.

Why would we want to go back when what we've been through has taught us so much?

It's time to bounce forwards instead.

In Bouncing Forwards Patrick draws on his own journey of making peace with his on-going anxiety, to look honestly and vulnerably at the temptation to wait for the day when all will be well whilst missing out on what's happening in the here and now. Exploring resilience, acceptance and emotional agility, Patrick shows how we can find meaning in some of life's toughest moments and the hope to journey on.

£321 En-Suite room per person
£276 Shared room per person (ACT805)



LEARN HOW TO GROW VEGETABLES

Volunteer in our Kitchen Garden and learn regenerative practices that not only benefit the soil, but produce amazing, quality vegetables.

No formal qualification required but a keen interest in food production, land and all things green.

APPLY NOW
SCAN ME



APRIL 2025



Tuesday 1st April 4pm - Friday 4th April 10.30am 2025

POTBOUND

Wendy Sullivan & Alison Bowden

POTBOUND is a Creative Prayer designed to give people time to relax, unwind, and explore a deeper walk with God through Creativity, new ways of praying. How much are we constrained by our circumstances, our habits, our hurts and our relationships? POTBOUND will explore ways to “loosen our roots” and find healing, growth and new fruit in deeper ways.

Wendy has been a follower of Jesus for more than 50 years and has been blessed to have a variety of church experiences having been in Baptist, Pentecostal and currently Vineyard churches.

Since retiring from a full time career in International Development, she has served on the Pastoral leadership team of her local church and has qualified in both Christian Mentoring and Spiritual Direction and has been active in prayer ministry and teaching, as well as church leadership.

She has a son and a daughter and three adult grandchildren, loves music, reading and the countryside. She loves to help people into a deeper understanding and walk with God. Alison was brought up in a Christian home but made her own commitment in 1973. She experienced significant trauma during her childhood and adolescent years, the healing of which has been greatly enhanced by the gift of Creativity that God has entrusted to her and which she loves to share with others. Her skills include needle felting and wire sculpture, which she loves to teach. She is a retired Oncology Nurse with three grown up children and six grandchildren!

£321 En-Suite room per person
£276 Shared room per person (ACT796)



Tuesday 1st April 4pm - Friday 4th April 10.30am 2025
Journey to the Cross
Sharon Garlough Brown

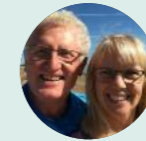
Join Sharon Garlough Brown as she leads us in ways of praying with Scripture and art based on Jesus' journey to the cross.

With painting of the stations of the cross for a prayer journey of New Hope, discovering along the way a deeper communion with the Man of Sorrows, acquainted with grief, drawn from her book, Remember Me.

Sessions will include opportunities for prayerful reflection.

£321 En-Suite room per person
£276 Shared room per person (ACT813)

AAA



Tuesday 15th April 4pm - Friday 18th April 10.30am 2025
Paul & Liz Lynch
Fresh Encounters with Jesus

This is an opportunity to retreat from the busyness of everyday life and encounter Jesus in a fresh and dynamic way as we explore how He met with a variety of individuals throughout the gospels who were never the same again.

People encountered Jesus in everyday life: in a boat, up a hill side, at a table, in a garden, in a storm, their lives were totally transformed. Some encountered his intimacy, for others it was peace, forgiveness, healing, hope and revelation.

This experience not only impacted their lives but those around them hence whatever situation we are facing today and whatever stage of life we are at Jesus, by his Spirit, longs to meet with us afresh and provide in abundance what we need.

Come expectant to rest whilst encountering the living God through bible teaching, testimony and prophecy. Encounter a fresh anointing and enthusiasm in your walk with God as we journey together during this special time together.

£321 En-Suite room per person
£276 Shared room per person (ACT809)



Tuesday 22nd April 12pm - Friday 25th April 10.30am 2025

Time Out

Steve & Eve Wood

Relax, Refresh, Renew. With winter having made way to spring, come & relax in our peaceful surroundings, enjoying a few days away from it all. A not too early (!) bird walk is on our programme on this break.

As well as offering space & time to explore the beautiful grounds of Ashburnham Place, our full & varied programme includes our morning & evening devotional times. There will be opportunities to join in a guided prayer walk, and individual prayer.

£336 En-Suite room per person
£291 Shared room per person (ACT779)



Tuesday 6th May 4pm - Friday 9th May 10.30am 2025

The Space

Epiphany

We look forward to welcoming you to a creative retreat with Epiphany's musicians, who are joined by photographer, Rachel Kiley, and artist, Tamara Jackson. Our time together will be largely unstructured, with optional gatherings each morning and evening, including relaxing improvised music and reflective thoughts for each day.

The rest of the time will give you the opportunity to enjoy and be inspired by the beautiful surroundings of Ashburnham Place, have a Sound Portrait with Epiphany's musicians, or to engage in photography and art explorations with Rachel Kiley and Tamara Jackson, as well as the opportunity for conversation and sharing ideas.

Come with your instruments, cameras or art materials and enjoy stretching your creative skills!

£321 En-Suite room per person
£276 Shared room per person (ACT793)



Wednesday 28th May 10am - 12pm

History Walk & Talk

Jay Ashworth

The grounds and gardens here at Ashburnham Place have been shaped over the generations by a number of gardeners and landscape designers, including Lancelot 'Capability' Brown.

Join Jay, one of our seasoned RHS trained garden team, as she leads the walk around the stunning grounds and gardens. The walk will be followed by refreshments back at the house.

£25 per person including refreshments

MAY
2025

JOIN OUR VOLUNTEER PROGRAMME

Apply for the Catalyst training programme. For 18 - 27 year olds who have a desire to live and grow in faith and life skills.



APPLY NOW
SCAN ME

SERVICE
COMMUNITY
TEACHING



Learn new skills

Develop your gifts

Be a part of a team



TEL: 01424 892244 OR
CATALYST@ASHBURNHAM.ORG.UK



Tuesday 27th May 4pm - Friday 30th May 10.30am 2025
Christ Crucified: The meaning and consequences of the death of Jesus

Steve Wood

In the New Testament the public portrayal of the crucified Jesus stands at the forefront. The meaning of the Cross is multi-layered and its consequences world changing.

From the Old and New Testaments, we will explore both aspects of the death of Jesus, and their implications for us today.

Using the ancient Christian practice of Lectio Divina ('divine reading') - an approach which includes hearing, meditation, prayer, and contemplation - the workshops will be both devotional and practical.

Notes and further reading /study recommendations will be provided.

£321 En-Suite room per person
£276 Shared room per person (ACT800)

VISIT THE NEWLY
TRANSFORMED SHOP
AT ASHBURNHAM PLACE!



Now offering a wider selection of artisan gifts and products, including fresh bread, local cheeses, and quality meats.



JUNE 2025

EVENTS & RETREATS

JUNE 2025



Tuesday 3rd June 4pm - Thursday 6th June 11.30am 2025

He Restores my Soul

Angela Walker

"Come and join Dr Angela Walker for a brand new retreat at Ashburnham place.

This healing retreat is an opportunity for you to rest in God's Presence as you allow Him to minister to your heart and restore your soul. 'He makes me lie down in green pastures and leads me besides quiet waters, He restores my soul!' Come along with an open heart to receive healing and freedom to your innermost being.

The teaching and ministry will include: 'Unblocking Hearts', 'Hearing God', 'Encountering Jesus in Trauma', 'Healing through Forgiveness', & 'Encountering the Father's Heart'.

£321 En-Suite room per person
£276 Shared room per person (ACT812)



Tuesday 24th June 12pm - Friday 27th June 10.30am 2025

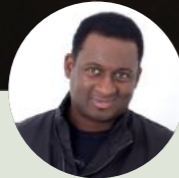
Time Out

Steve & Eve Wood

Relax, Refresh, Renew. Warmer weather & longer evenings invite us to enjoy sitting in the gardens or strolling along the woodland walks & lakeside pathways of Ashburnham Place.

Our full & varied programme offers many ways to spend your time, including opportunities to join in a guided prayer walk, and individual prayer, morning & evening devotional times, craft & interesting talks.

£336 En-Suite room per person
£291 Shared room per person (ACT780)



Tuesday 8th 4pm - Thursday 10th 4pm July
Restore Worship
Noel Robinson

Check the website for up to date pricing

Noel Robinson and the Renewal Worship gatherings are making a comeback. Join us for a few days immersed in the supernatural presence of God.

This special event is tailored for those of you who, in recent years, have longed for a retreat, desiring to connect with passionate, like-minded believers who share a profound love for God's presence.

We're intentionally setting aside time for you to step away, allowing yourself to enter a moment of repose, realignment, and departure with a revitalised spirit.

Amidst the spiritual landscape, there is a profound struggle for the well-being of your soul and the devotion of your affections. God is calling you to a place of rest, tailored just for you.

Noel Robinson will be hosting these impactful days, joined by guest speakers and worship leaders who will enrich your experience. Don't miss this opportunity to partake in days that promise to be transformative, offering a space where the sacred and supernatural converge. Come, experience this celestial rendezvous, and leave not just refreshed but with a renewed spirit, ready to face the world with newfound strength and clarity.

BECOME A FRIEND OF ASHBURNHAM PLACE

Our friends share the vision and calling of Ashburnham Place through prayer, giving, volunteering and challenge.



SCAN
HERE



EVENTS CANCELLATION

Whilst we do, all within our power, to ensure our events proceed as programmed, inevitably things happen, and we have in the past needed to cancel events. Where this has happened, it has been due to speaker illness, where we can't get a replacement, or due to lack of bookings to make it viable. In the same way, we understand that there will be times where guests will also need to cancel their booking, and so we have created the following cancellation policy, to clarify what will happen in these situations.

EVENTS CANCELLATION BY ASHBURNHAM PLACE

Ashburnham Place reserves the right to modify the programme of any event up to the day of the event.

If 3 weeks prior to the event, guest numbers are low, Ashburnham Place will contact you to advise of its possible cancellation, and to tell you what would happen and when.

If unforeseen circumstances cause Ashburnham Place to cancel an event up to 3 days prior to the event, we shall inform you as soon as possible and offer you a full refund and the cost of any pre-booked travel expenses, on production of payment receipts.

EVENTS CANCELLATION BY YOU

If you wish to cancel a booking, please note the following cancellation conditions:

- In the event of cancelling your booking up to 6 weeks before the start/arrival date of the event, the deposit is non-refundable.
- For guests who cancel within six weeks of the start/arrival date of the event the full cost is non-refundable.

EXCEPTIONAL CIRCUMSTANCES

If due to exceptional circumstances you cannot attend a booked Ashburnham Place event and do not wish to cancel, but would like to transfer to another future event, please contact our bookings office on 01424 892244 or bookings@ashburnham.org.uk who will assess each request subject to its own individual circumstance and the availability of the future event.

EXCEPTIONS: If you wish Ashburnham Place to consider exceptional circumstances, email us at bookings@ashburnham.org.uk

PLEASE NOTE: We strongly recommend that you take out personal holiday insurance to cover any cancellation fees.

GETTING TO ASHBURNHAM PLACE

Ashburnham Place is situated five miles west of Battle on the A271.

By Road

From South East London and the Dartford Tunnel. Take the A21 through Pembury, Lamberhurst and Robertsbridge. At John's Cross turn right on to the A2100 signposted to Battle. On the outskirts of Battle, at the roundabout, turn right on to the A271 signposted Bexhill. The entrance to Ashburnham Place is on the right, about four miles from Battle, 200 yards after a very sharp bend.

From South West London and Heathrow Airport

Take the M25 anti-clockwise to Junction 6 and then take the A22 through Godstone, East Grinstead, Forest Row and down to Horsebridge (the Boship Hotel roundabout). Take the second exit on to the A271. Continue through Magham Down, Herstmonceux and Windmill Hill to Boreham Street. After leaving Boreham Street the A271 turns left, signposted Battle. After about 2 miles you will see Ashburnham Place on the left hand side at the brow of the hill.

By Train

There is usually at least an hourly service from Charing Cross and Waterloo East to Battle via Sevenoaks and Tonbridge. Battle Station is about 5 miles from Ashburnham Place. Taxis are available outside the station. There is also an hourly service from Victoria to Bexhill via Clapham Junction, East Croydon, Gatwick and Eastbourne. Bexhill Station is about 7 miles from Ashburnham Place. Taxis are available outside the station.

By Taxi

Guests wishing to use taxis from the station are recommended to book in advance, particularly on Sundays. The following companies offer a regular service:

Taxis in Battle

- Battle Taxis - 01424 777 222
- Town & Country - 01424 772 222 - 24 seven - 01424 777 077
- Taxis in Bexhill
- Shah's Taxi - 01424 211 171 or 07930 804 030

Ashburnham Place
Battle
East Sussex
TN33 9NF
United Kingdom



BOOKING & INFORMATION

For booking or more information please visit the
website at www.ashburnham.org.uk/events

RECEPTION/BOOKINGS OFFICE OPENING HOURS

Tuesday - Sunday 9am - 4pm
Monday - not open

Switchboard: 01424 892244
Bookings: 01424 894201



BOOK NOW
SCAN ABOVE



@ashburnhamplace
ASHBURNHAM.ORG.UK



Ashburnham Place
Battle
East Sussex
TN33 9NF
United Kingdom